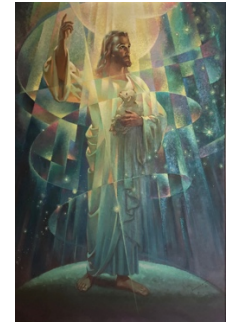
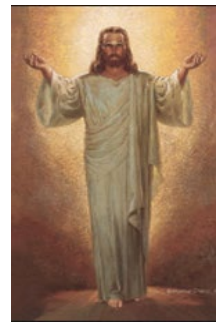
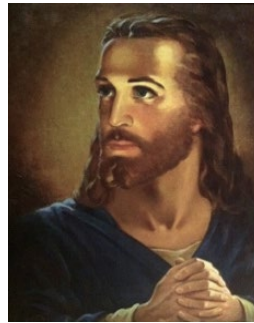
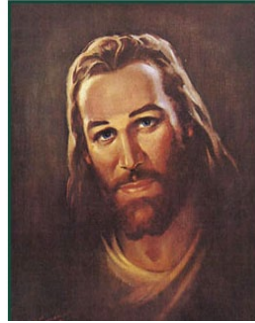
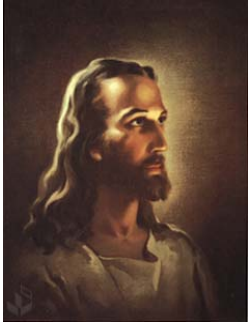
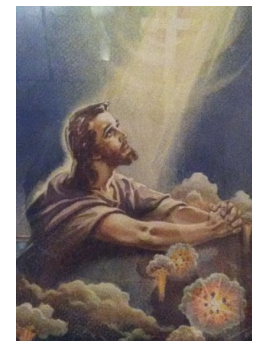


WARNER SALLMAN COLLECTION VIEWBOOK

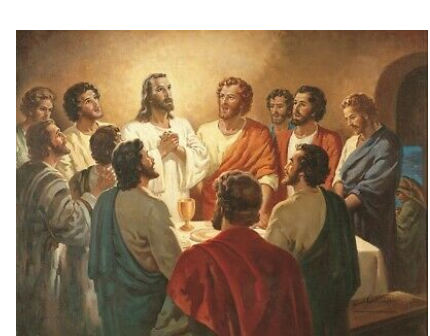
YORK GALLERY: OIL ON CANVAS



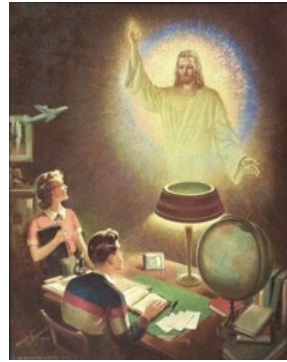
YORK GALLERY: OIL ON CANVAS, (last on is watercolor on paper)



YORK GALLERY: OIL ON CANVAS



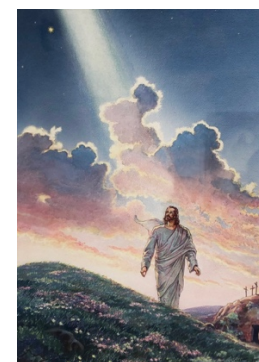
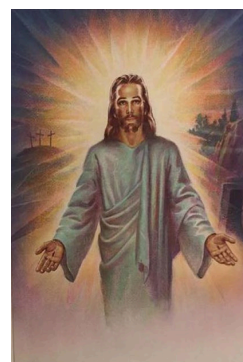
YORK GALLERY: WATER COLOR / OIL ON CANVAS



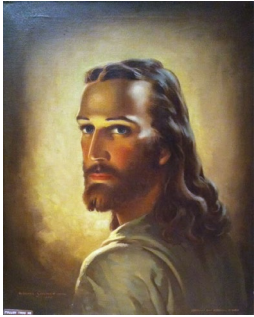
YORK GALLERY: OIL ON CANVAS, CHALK



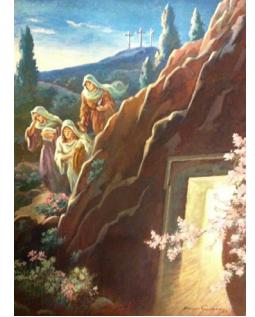
YORK GALLERY: WORKS ON PAPER



C1: UNFRAMED OIL ON CANVAS



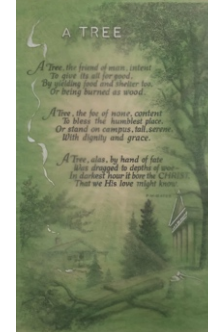
C2: FRAMED WORKS ON PAPER X2, ACRYLIC ON BOARD



C4: WATERCOLOR, C6: OIL ON CANVAS, B3: OIL ON BOARD



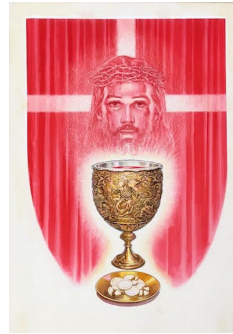
B5: BULLETIN COVERS, TRAVELING EXHIBIT



B4: FRAMED WORKS ON PAPER

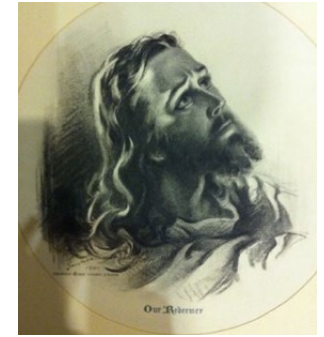
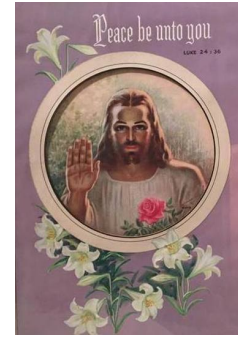
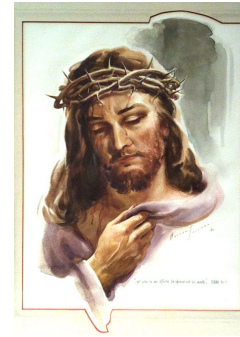
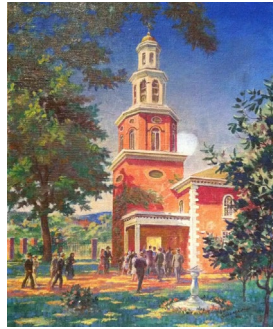


B5: BULLETIN COVERS, TRAVELING EXHIBIT

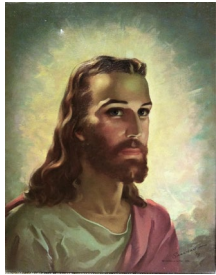


B4: FRAMED WORKS ON PAPER, ACRYLIC

B3: FRAMED WORKS ON PAPER, PLEXI FLOATED DRAWING



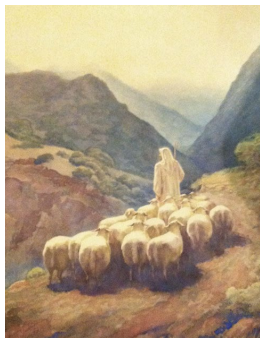
B2: SALLMAN



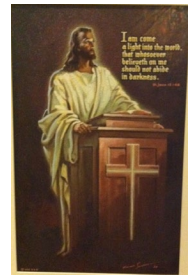
B3: PLEXI FLOATED AND FRAMED WORKS ON PAPER



F1: WORKS ON PAPER

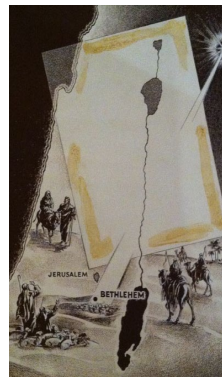
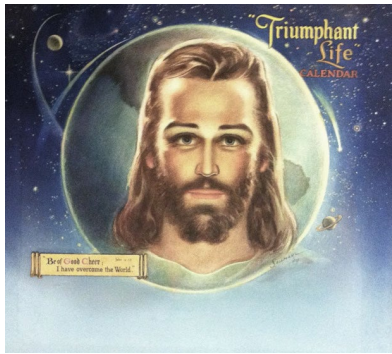


F1: PASTEL AND ACRYLIC ON BOARD

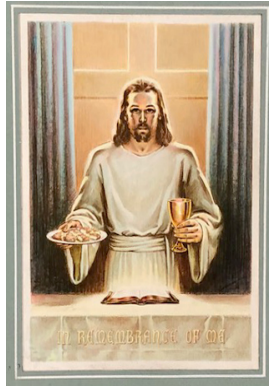
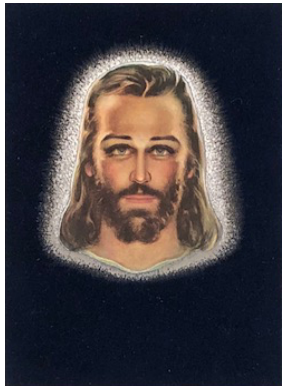


F4: BULLETIN COVERS

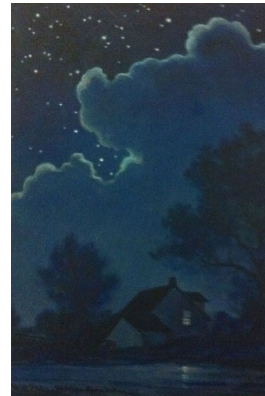
F4: BULLETIN COVERS



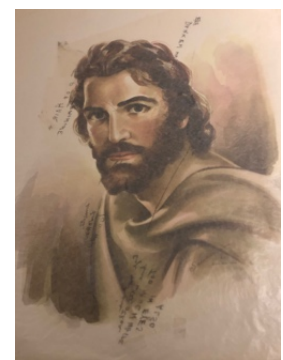
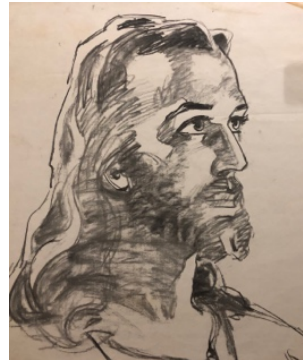
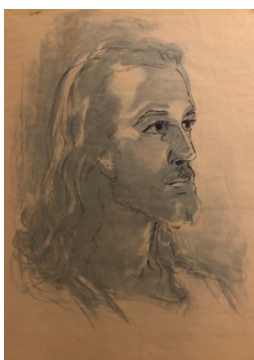
F4: BULLETIN COVERS



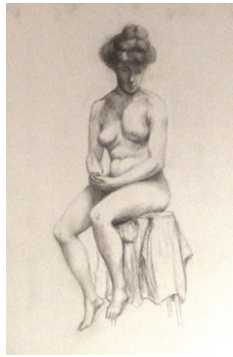
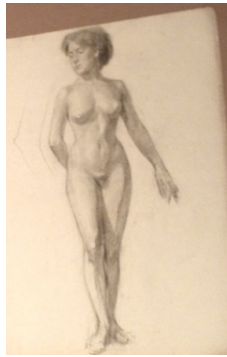
F4: BULLETIN COVERS



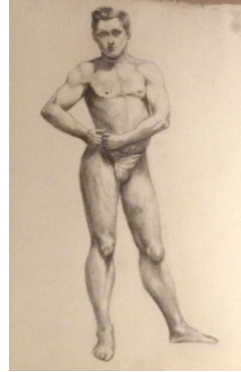
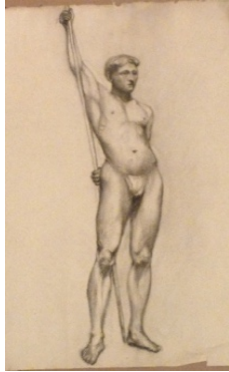
F3: LARGE DRAWINGS



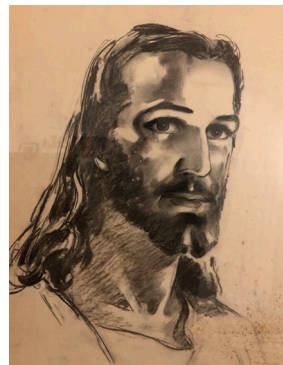
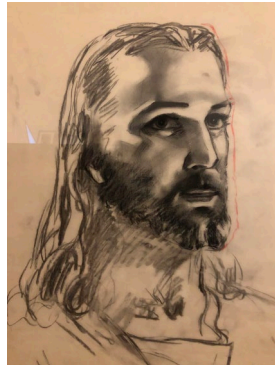
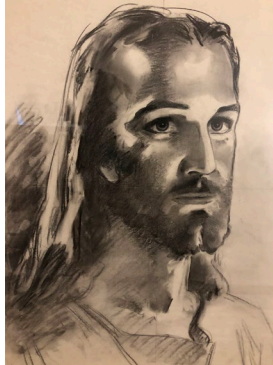
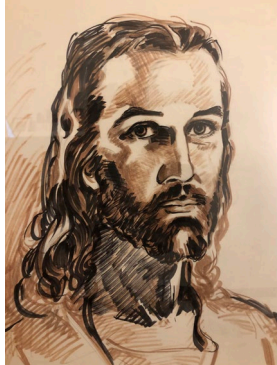
F3: STUDENT, LIFE DRAWINGS



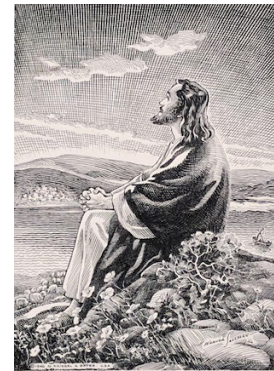
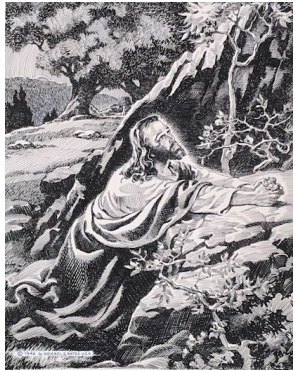
F3: STUDENT, LIFE DRAWINGS



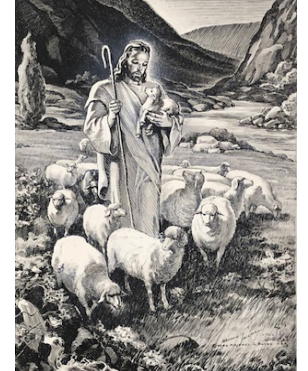
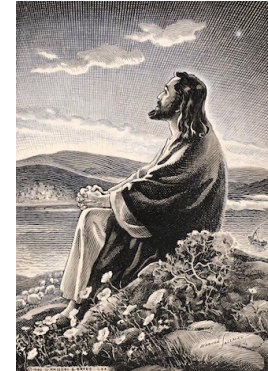
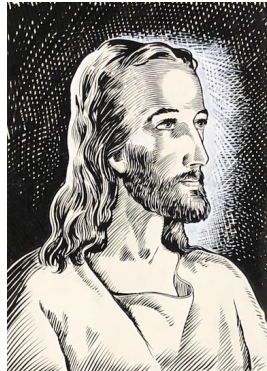
F2: HEAD OF CHRIST DRAWINGS (PLEXI AND BOARD)



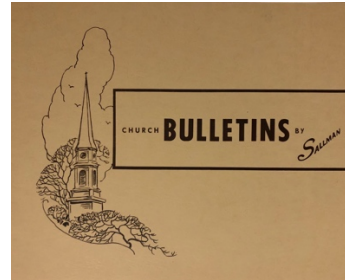
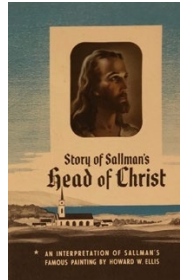
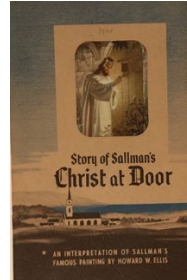
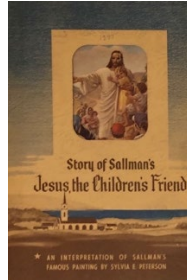
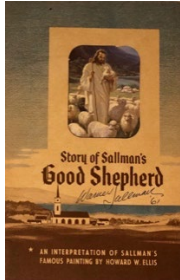
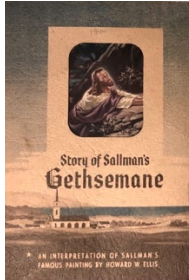
F2: INK DRAWINGS ON BOARD, MATTED



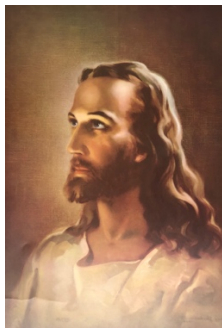
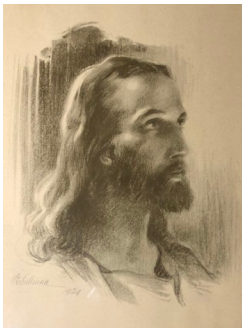
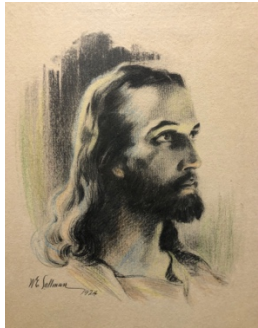
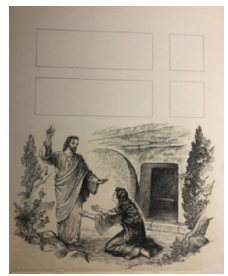
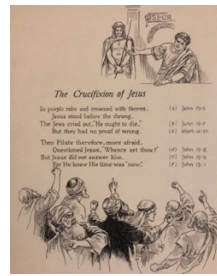
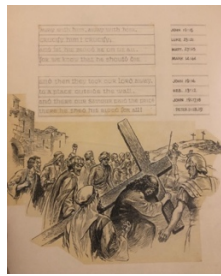
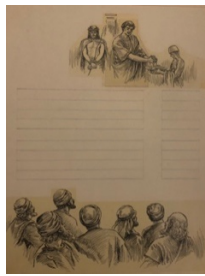
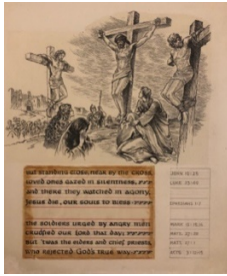
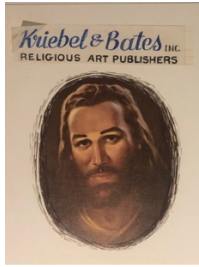
F2: SALLMAN: UNMATTED STUDIES OVER LITHOGRAPHS



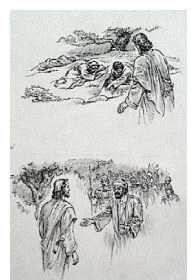
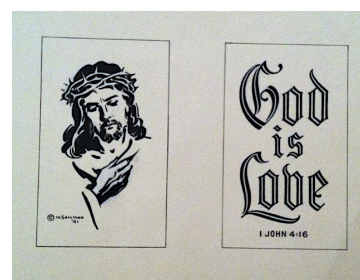
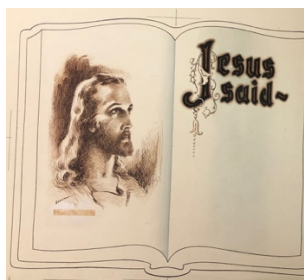
F5: SALLMAN: REPRODUCTIONS



F5: SALLMAN: REPRODUCTIONS



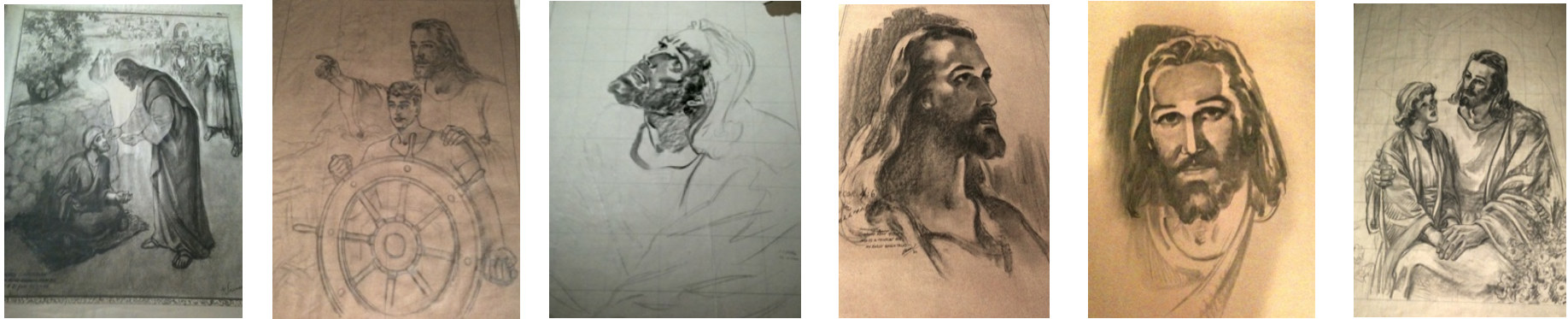
F2: SALLMAN: SKETCHES (x3). F5: REPRODUCTIONS



F2



OFFICE: SALLMAN'S LARGE WORKS ON PAPER



OFFICE: SALLMAN'S LARGE WORKS ON PAPER

